

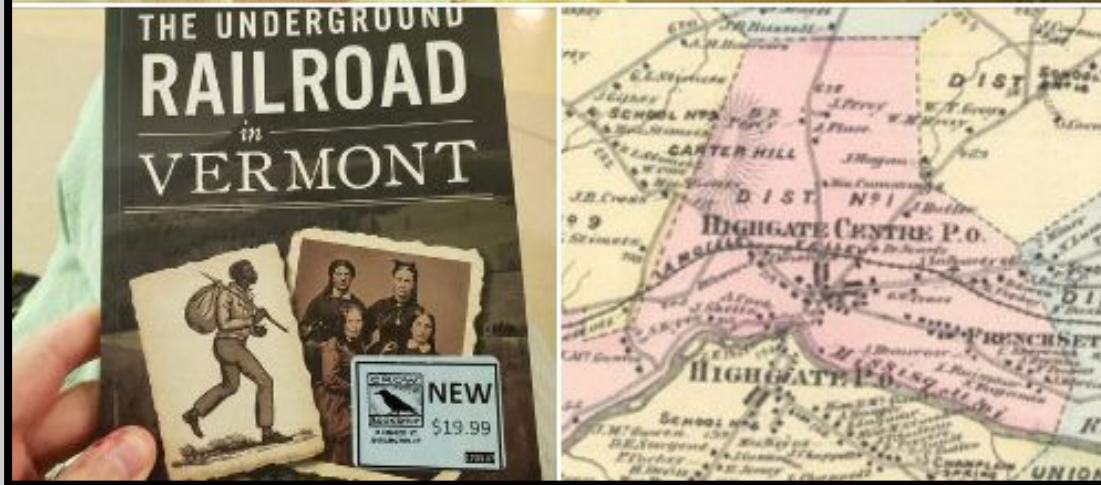
“Mysteries Along the Missisquoi”

Swanton Enhancement

Jason Barney

Thanks for Coming!



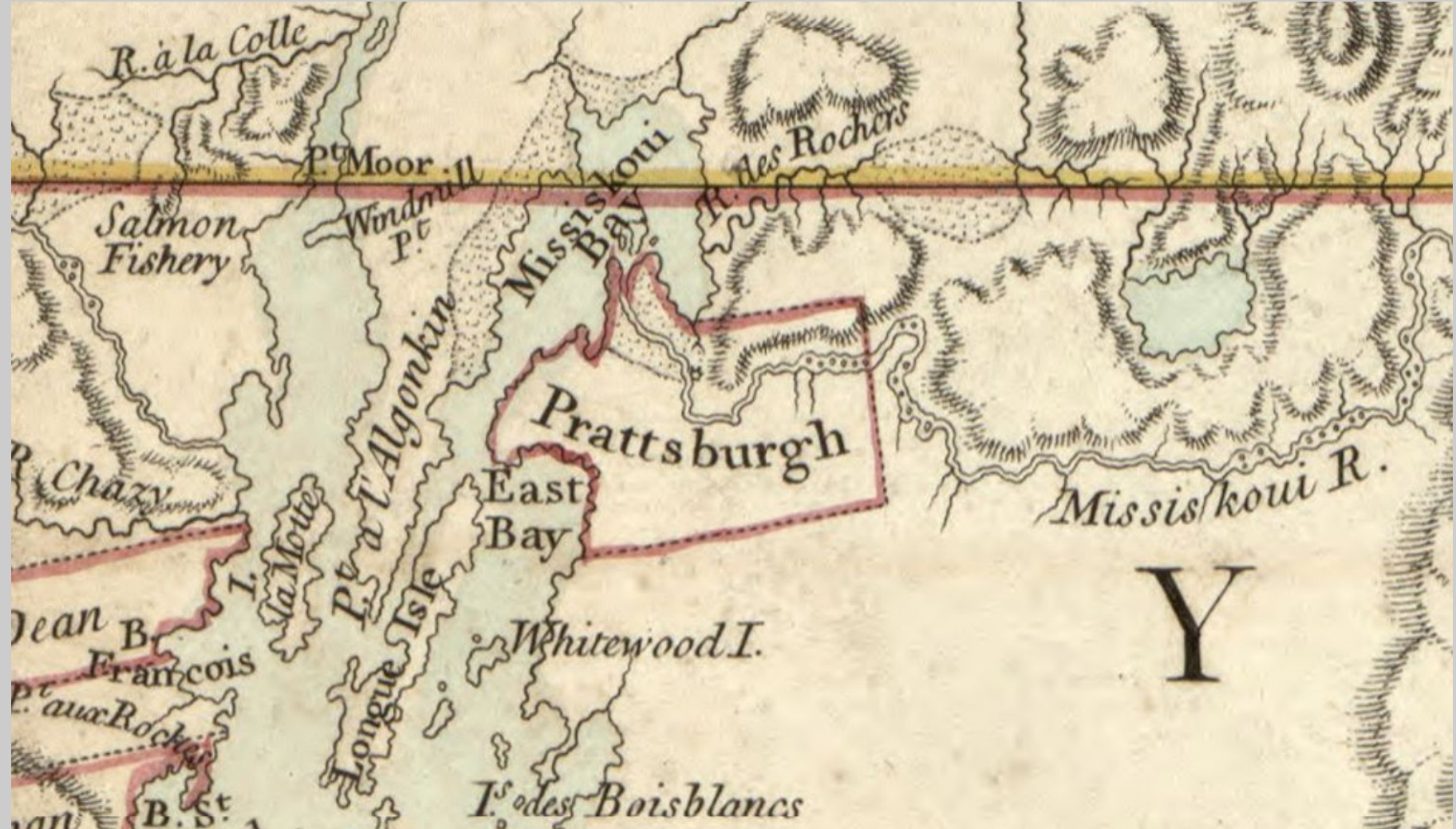


2025

is the 250th

Celebration of the

American Revolution



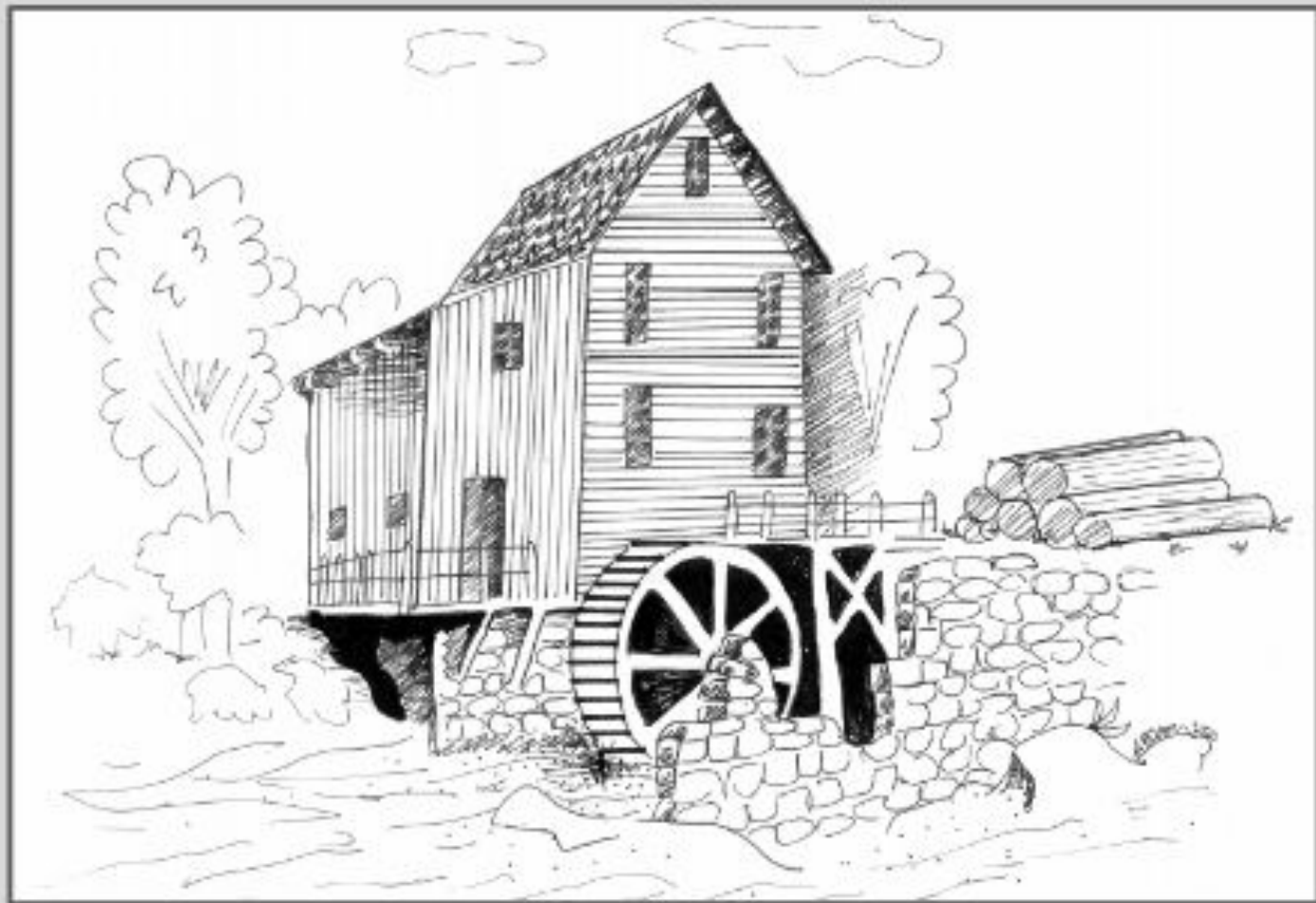
Y

*A Map of
Tiquabunga Falls
on
Missisque River.
At the site of the saw mill farm.*



A View of Tiquabunga.





The Metcalf Sawmill at Swanton Falls (Artwork by MVU Teacher Ashley Bowen)





Katherine
41 Foot Long, Slight Draft















S.S. & S.W. Keyes

Sentinel and Democrat

Fri, Nov 25, 1825 · Page 2

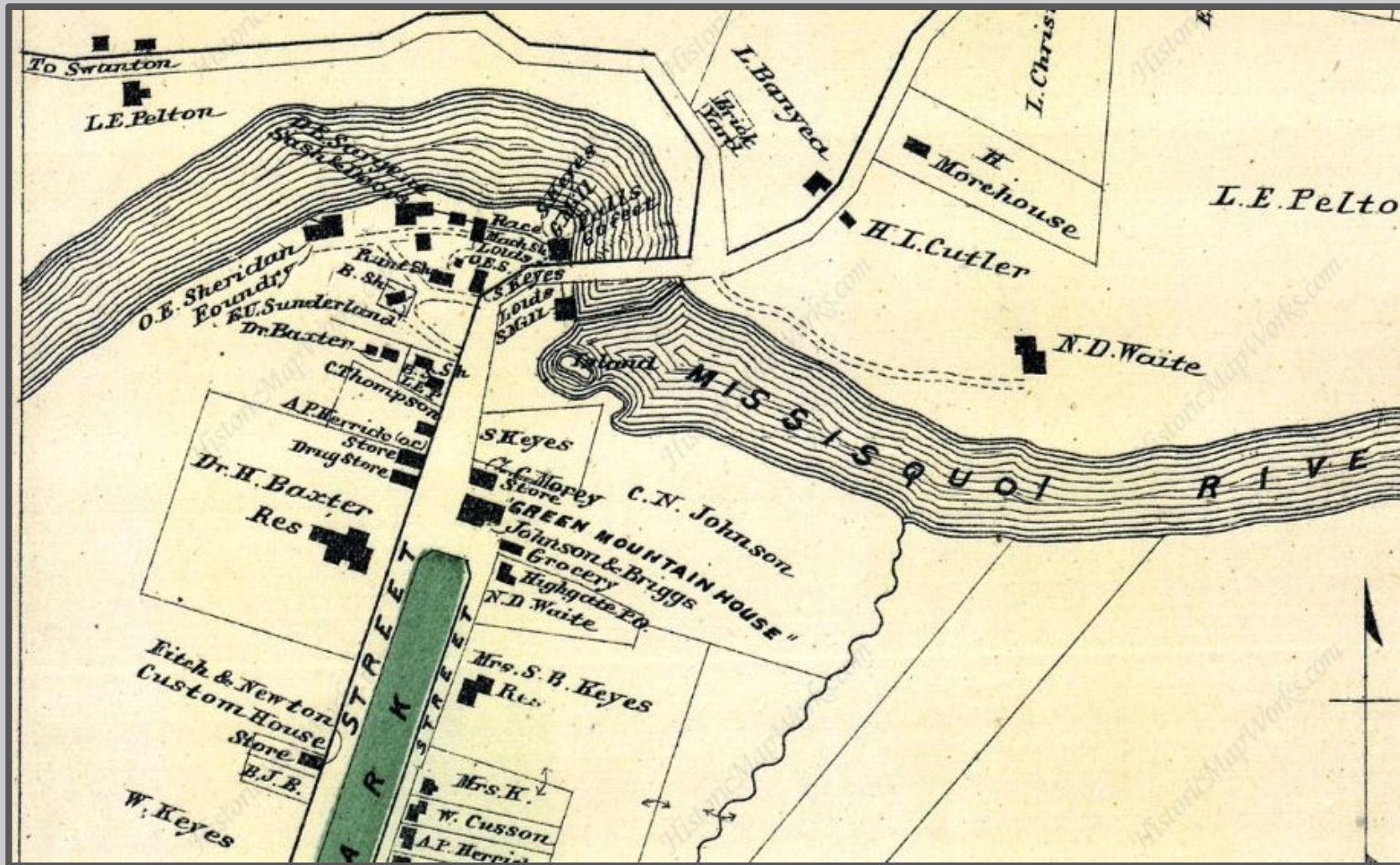
The following acts were read a third time and passed—annexing part of the town of Mt. Tabor to the town of Dorset—repealing an act incorporating Johnson's Gore into the town of Acton—changing the name of the town of Navy into that of Charleston—Authorizing S. & S. Keyes to erect a wharf in the town of Highgate—annexing Reuben Haven to the 9th school district in Benson—directing the treasurer to pay Horace Everett, a sum of money—to authorize Moses Catlin to sell the land of his Ward—authorizing John Fisk to sell the land of his Ward—authorizing the guardian of Stephen Fulsom to sell land—incorporating the Vermont Infirmary.

House Adjourned.

Evening Session.

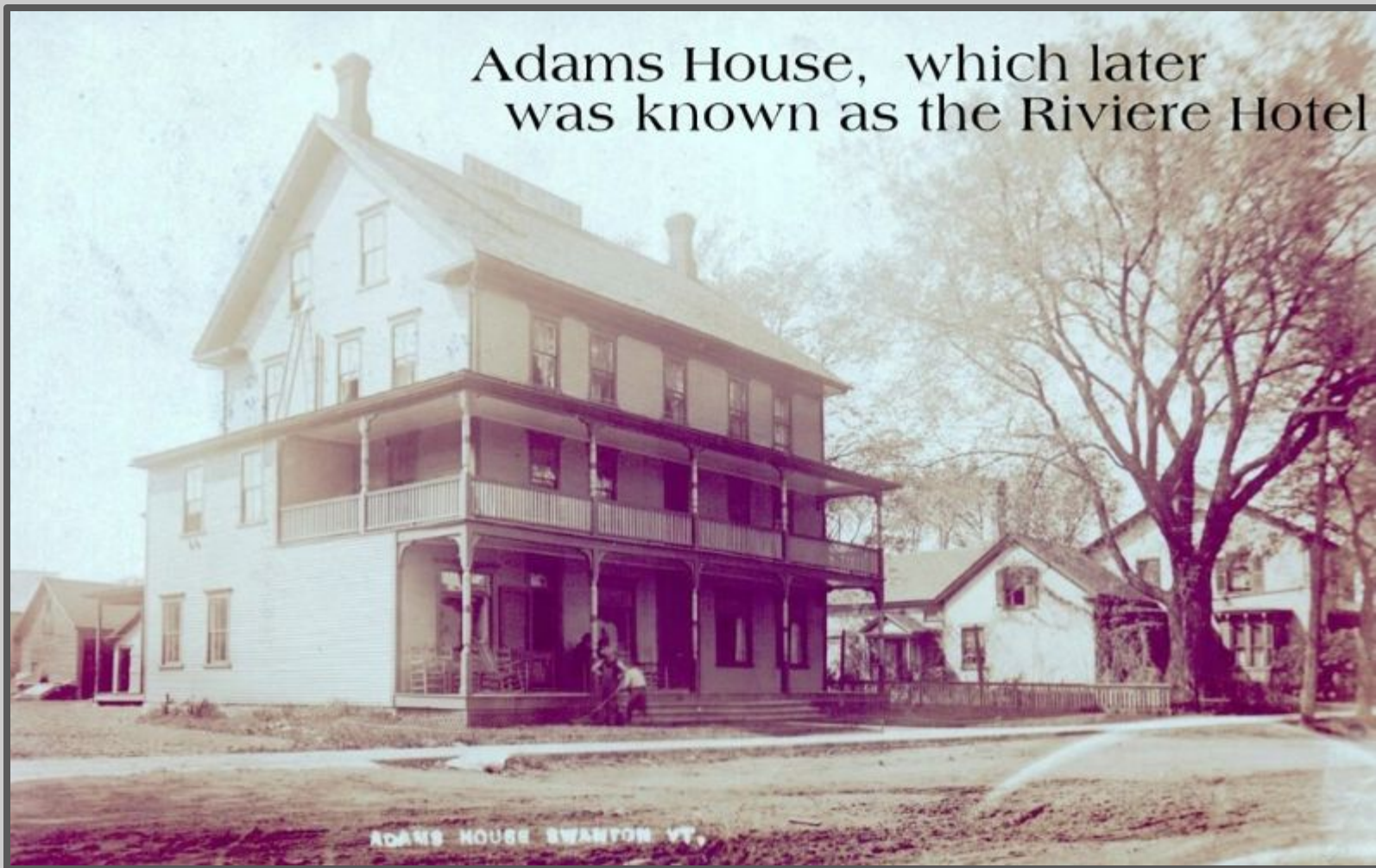








Adams House, which later
was known as the Riviere Hotel



ADAMS HOUSE SWANTON VT.



Ship Building



Shipping on Lake Champlain.

Capt. George Rushlow, General Manager of the Champlain Transportation Co. has furnished to the Plattsburgh *Republican* a full list of sail vessels on Lake Champlain, with character, dimensions, tonnage, date and place of building, names of owners, masters, etc., compiled from Custom house records at Burlington and Plattsburgh. It is especially interesting to note the places in the Champlain valley where ship building has been carried on. First in the list of them stands Essex, where fifty-three vessels were built from 1814 to 1870. Next in importance is Champlain, with twenty vessels built between 1836 and 1882. At Burlington, Vt., eighteen vessels were built between 1828 and 1862; at Whitehall, eleven from 1828 to 1858; at Isle La-Motte, Vt., ten from 1837 to 1862; at Willsboro, seven from 1835 to 1865; at Grand Isle, Vt., seven from 1822 to 1838; at Milton, Vt., seven from 1839 to 1851;

at Milton, Vt., seven from 1839 to 1851; at Swanton, Vt., seven from 1825 to 1848; at Ticonderoga, four from 1847 to 1882; at Alburgh, Vt., four from 1837 to 1847; at Plattsburgh, three in 1827, 1835 and 1837; at Rouses Point, two in 1849 and 1852; at St. Albans, Vt., two in 1824 and 1843; at Westport, two in 1849 and 1852; at South Hero, Vt., two in 1836 and 1884; at Peru Landing, two in 1847; at Port Douglass, one in 1866; at Port Jackson, one in 1843; at Colchester, Vt., two in 1848 and 1864; at Vergennes, Vt., two in 1827 and 1845; at Port Kent, one in 1833; at Bridport, Vt., one in 1822; at Cumberland Head, one in 1827; at Highgate, Vt., one in 1826; at Fort Edward, one in 1864; at Fort Ann, one in 1837, at West Troy, one in 1842; at Phillsburgh, one in 1865.

As to character, the vessels are classified as follows: Twenty-four schooners, twenty-three sloops, twenty-three schooner-rigged lake and canal boats, ninety-six sloop-rigged lake and canal boats, four schooner-rigged scows, one sloop-rigged scow lake and canal boat, three sloop-scows, four rigged lake and canal boats, four barges.



W. H. Blake of Swanton, Geo. Webster master,
Geo. and Alexander Webster owners; built Swan-
ton 1847; l. 76 ft., t. 54.

HIGHGATE SPRINGS.

Capt. Hawley, P. Rooney and Allie Barr of Swanton, spent some time Saturday exploring in the vicinity of Lime Kiln Point and were rewarded by finding an old anchor, weighing two or three hundred pounds. The anchor is said to have belonged to the old schooner, **W. H. Blake**, or the Fraley that sailed the lake thirty or forty years ago. The explorers found the old wreck and moved a portion of it by means of dynamite and later they found the anchor which they pulled out of the sand by means of tackle blocks.

MVU Students and Swanton's History

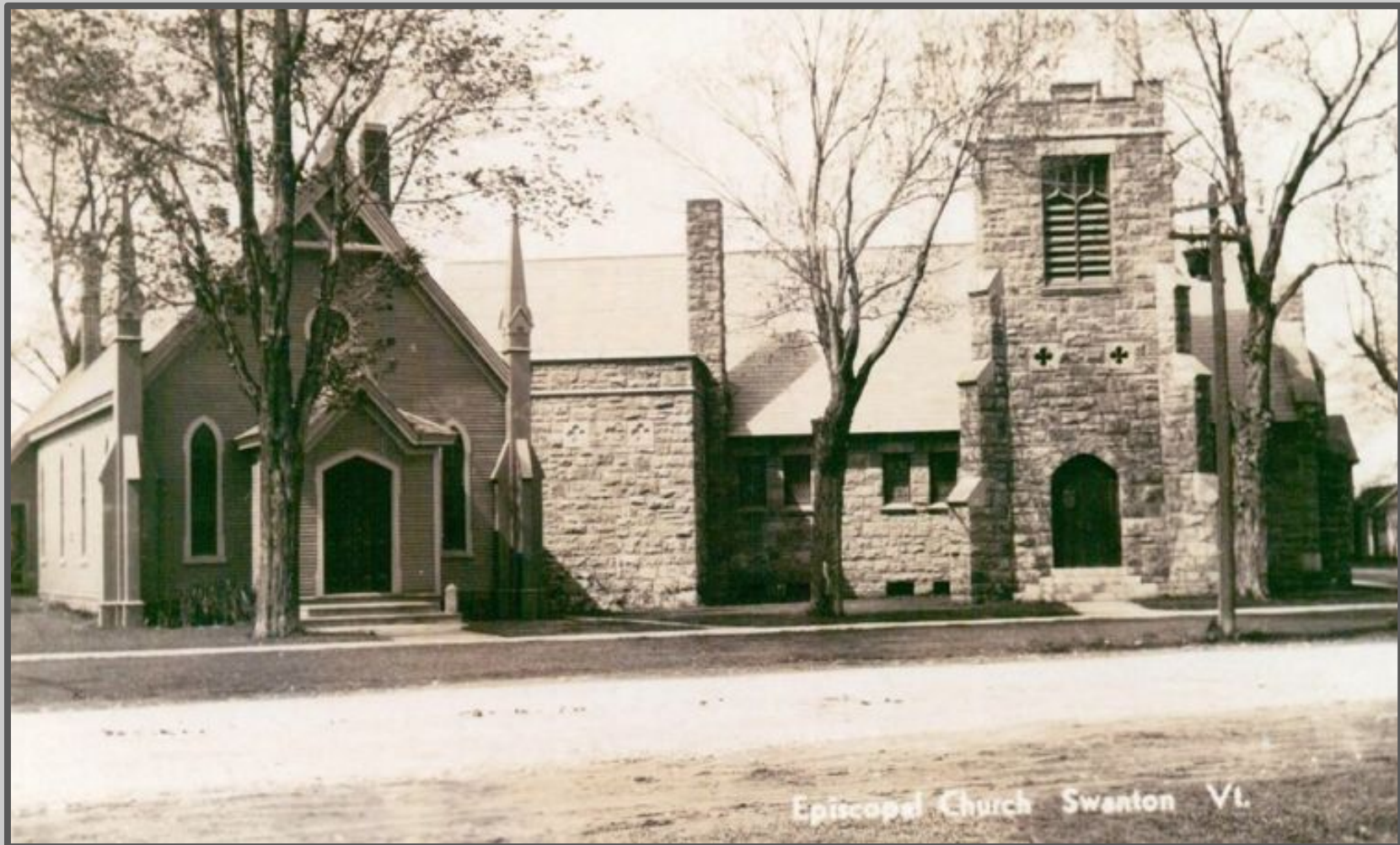












Episcopal Church Swanton Vt.





**Marker at Site of Jesuit
Mission on Monument Rd.**









HIGH SCHOOL, SWANTON, VT.

902.

CLUB HOUSE & BANK
SWANTON, VT.











